

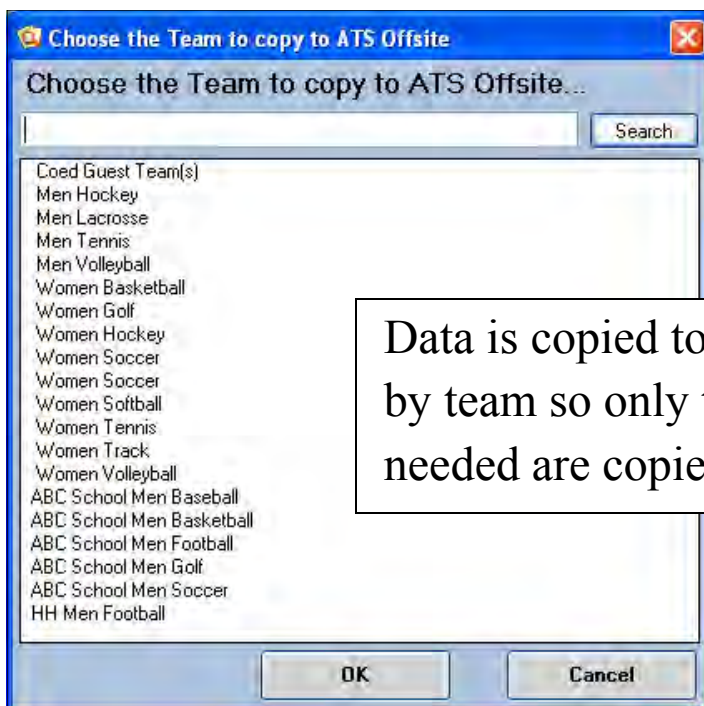
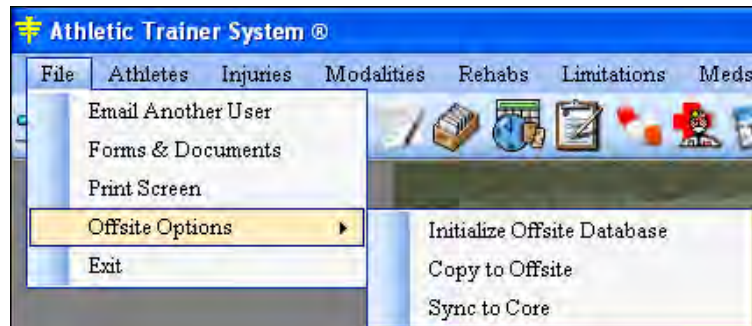
ATS Offsite Module – Overview

The ATS Offsite was designed to give you an alternative to using a pen & notepad on the road when you do not have access to the internet.



It gives you the ability to copy current data onto a laptop; enter notes, injuries, etc.; then post your updates to the main database when you have an internet connection.

Once the ATS Offsite is installed on your laptop moving the data back & forth is done using the menu choices shown



Data is copied to the Offsite database by team so only the athletes that are needed are copied.

ATS Offsite Module – Overview

Data entry may be done in a number of locations...



At an airport



Practice/Game



On a plane or bus

Using the ATS Offsite you may enter injuries, notes, and more. The screens used are the same as the ATS Core.

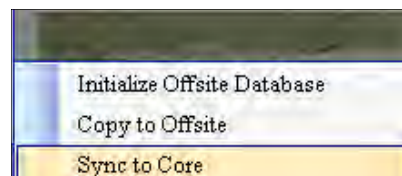
The screenshots show the following data entry screens:

- Injury**: Fields for Name, Injured date (1/16/2010), Reported date, Status (Current), Re-injury?, Body Part, Side, and Playing Surface.
- Notes/SOAP Notes**: Fields for Athlete (Anderson, Charlotte), Entered by (Rhett Keffer), Note Date (1/16/2010), Injury (12/28/2009: Knee - Cartilage injury (Right)), Note Type (Observation), and a text area for the note.
- Modalities**: Fields for Name (Anderson, Charlotte), Date (12/17/2009 12:00:00 AM), Injury (12/14/2009 - Swelling - Left - Elbow), Body Part (Elbow), Side (Left), and a table of modalities.
- Rehab Session**: Fields for Name (Anderson, Charlotte), Date (12/14/2009 3:20:00 PM), Injury (12/14/2009 Elbow - Swelling (Left)), Reason (Flexibility), Athletic Trainer (Rhett Keffer), and a table of exercises.

Modality	Duration	Comment
Ice Massage	10	
Electrical Stimulation- Interferential	15	
Passive Range of Motion	15	

Exercise	Sets	Reps/Time	Comments
Towel Stretch	3	5	
Tension Band - Red one	3	10	
4-way tubing	2	12	

Once an internet connection is re-established, information that was updated or added is posted to the main database when the “Sync to Core” menu option is chosen.



Current functions available in the ATS Offsite

Edit athlete information

- Demographics
- Emergency contacts
- Immunizations
- Insurance
- Surgeries
- Medical history questions
- Electronic documents

Add, Edit, Delete

- Concussion evaluations
- Injuries
- Limitations
- Medications
- Modalities
- Notes
- Pre-participation documents
- Rehabilitations